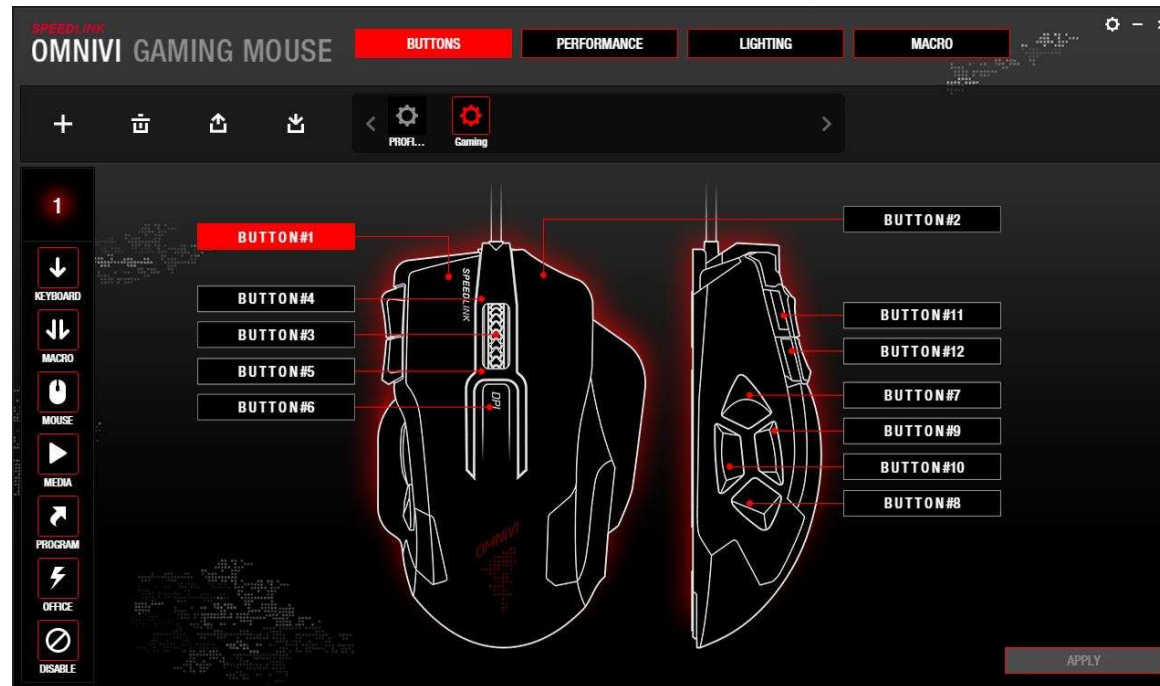


# OMNIVI CORE GAMING MOUSE



## Profile selection

All the profiles that have been created are displayed in the centre of the top row. Click the large gear icon to access the configuration settings for the particular profile. The default profile (Profile\_1) is active when the driver is installed for the first time. Click the '+' icon to create a new profile; click the 'bin' icon to delete a profile. To save a profile to your hard drive, or to import one from it, click the relevant 'arrow' icon.

## Button settings

The 'BUTTONS' menu lets you map a command to each mouse button. First select the desired button (#1-12) in the button overview by clicking it. The button number will be displayed in the menu bar on the left. You can now select the function you want to map to the button.

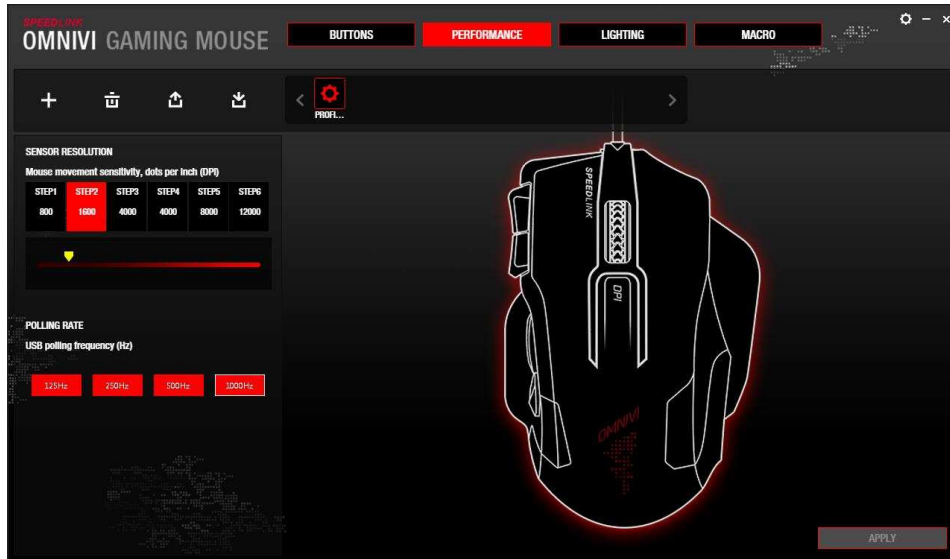
Button functions from top to bottom:

1. Keyboard command (individual button or combination with Shift/Ctrl/Alt/Win)
2. Macro
3. Mouse function (clicks, dpi settings, etc.)
4. Media function (play, stop, back, forward, etc.)
5. Application start (software)
6. Windows/Office/browser function
7. Disable button

Confirm the mapping by clicking 'APPLY'. Then save all the settings by clicking the second 'APPLY' button on the bottom right in the menu.

If you want to delete a button mapping (restore the default setting), hover the mouse pointer over the particular button box ('button #1-12') and then click the small 'bin' icon in the window that appears over it. Note: The 'left click' function must be assigned to at least one mouse button.

# OMNIVI CORE GAMING MOUSE

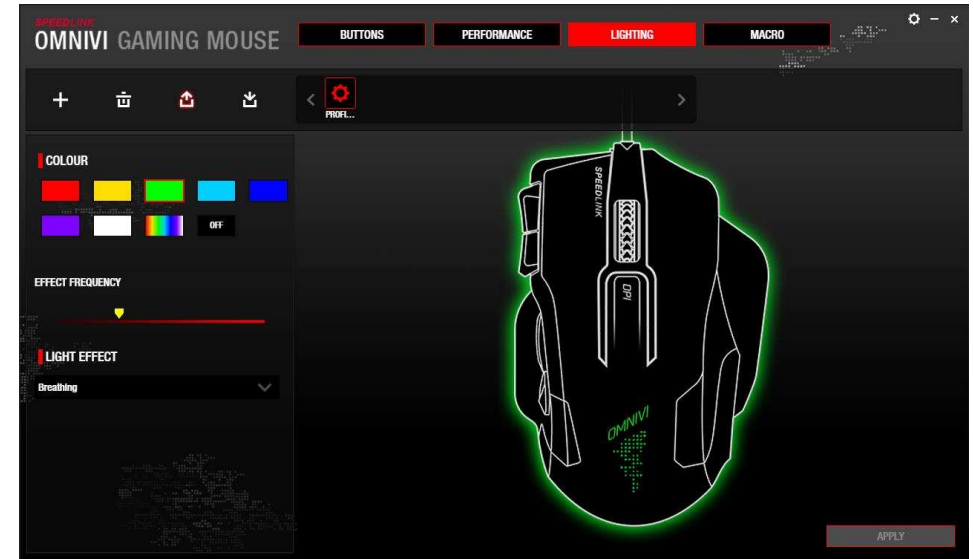


## Performance

**Sensor resolution:** You can adjust the sensitivity of the mouse sensor (dpi = dots per inch) by clicking the level or the dpi mouse button. In terms of the dpi number: the higher the number, the more sensitive/faster the mouse pointer. If you want to customise the sensitivity more precisely, move the yellow slider to the desired dpi number (100-12,000).

**Polling rate:** Here you can configure the USB polling rate by clicking the relevant button (125-1,000Hz).

Info: Each value represents a signal interval at which your PC polls your mouse for information (actions) (125Hz = lowest polling rate – 1,000Hz = highest polling rate)



## Lighting

You can adjust the lighting functions in the menu bar on the left. To the right, the OMNIVI visualisation shows you a preview of your changes.

**Colour:** Select the lighting effect colour (7 individual colours, colour cycling).

Note: This setting only applies to the all-round glow. The logo on the back of the mouse cycles automatically through all available colours. The scroll wheel glow colour depends on the dpi level selected.

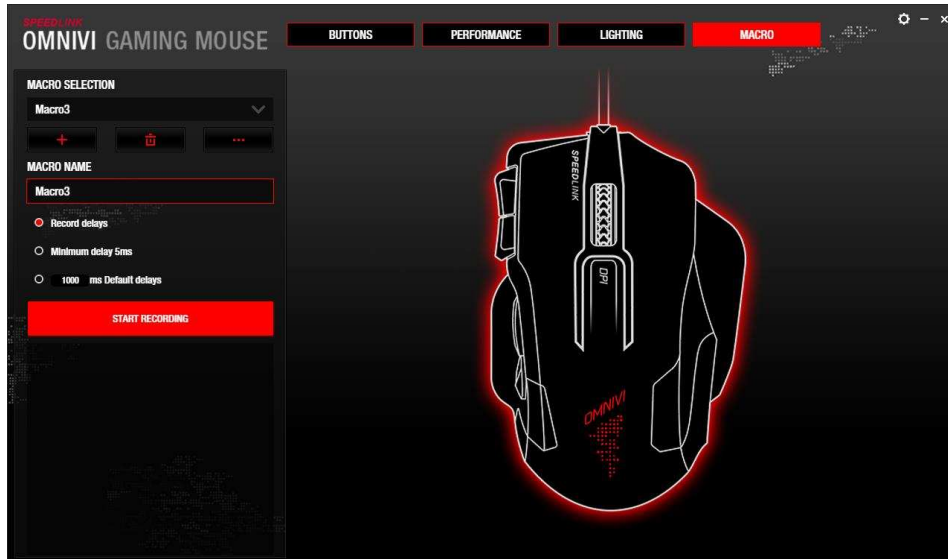
**Effect frequency:** Move the yellow slider from the left (slow) to the right (fast) to set the speed of the effect (breathing, solid, flashing).

**Light effect:** Select the desired light effect here (bright, breathing, solid, flashing).

Note: Some effects do not work in combination with individual colours; they only work with colour cycling.

SL-680006-BKRD

# OMNIVI CORE GAMING MOUSE



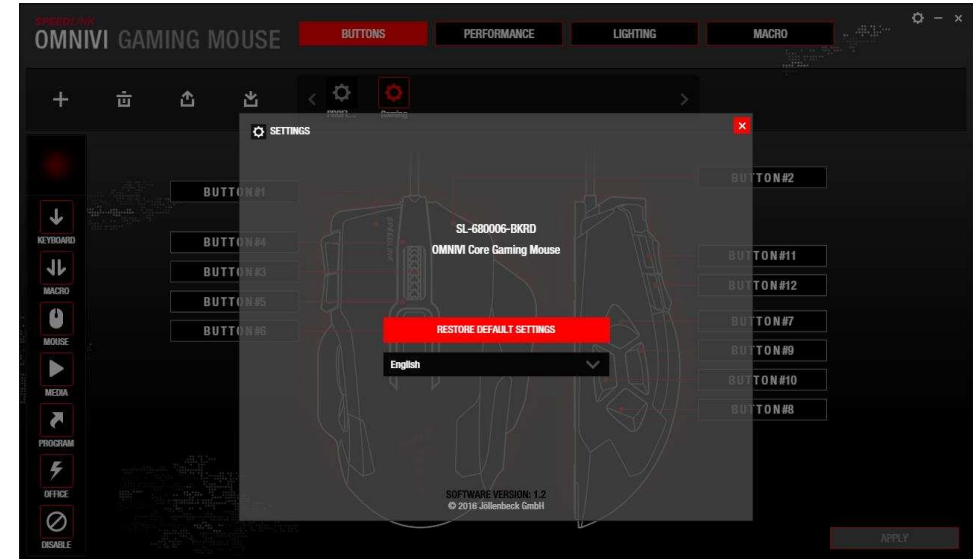
## Macros

To create a new macro, click the '+' icon. The driver will assign the name 'Macro1' automatically, but you can change this. To delete the selected macro, click the 'bin' icon. The '...' button lets you import/export a macro from/to your hard drive.

Delay: Under the macro name, you can configure the delay between the individual key commands.

- 'Record delay': incorporates delays between commands when recording the macro
- 'Minimum delay': inserts a 5ms time interval between commands
- 'Default delays': allows a default interval to be set

Click 'START RECORDING' and enter the key/button commands for the macro. End recording by clicking 'STOP RECORDING'.



## Restore default settings

Click the small gear icon on the top right and then click 'RESTORE DEFAULT SETTINGS' in the window that appears. Doing this resets all driver settings back to their factory default.